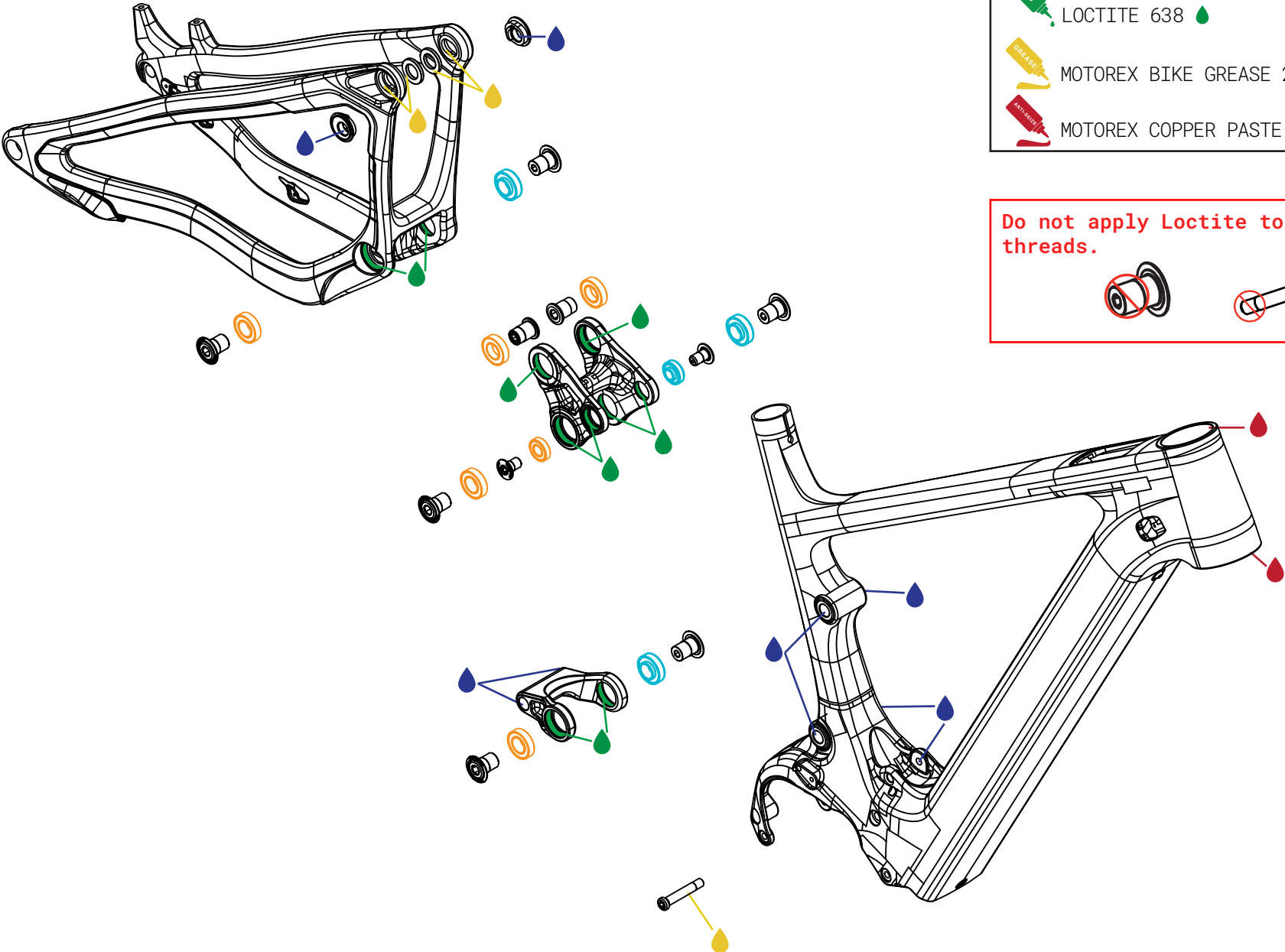


Shuttle AMP'd



SAMP1 FRAME ASSEMBLY REFERENCE

- Before any re-assembly clean all surfaces of any dried loctite, dirt, or grease.
- Clean all surfaces with isopropyl alcohol and let dry before assembling.
- Apply Loctite 638 or an equivalent to all bearing pocket when installing bearings. Use a round wooden toothpick to spread the material evenly around the pocket before installing the bearing.
- Press fit bearings are installed during pre-assembly and are shown in **orange**. Slip fit bearings are installed during frame assembly and are shown in **light blue**.
- Apply Loctite 243 or an equivalent to the female threads of the frame, link, or shock, not on the bolt threads. Use a round wooden toothpick to spread the material evenly around the threads.
- Apply Motorex Bike Grease 2000 to the flip chip steel washers, the flip chip pockets and the shaft of the lower shock bolt. Do not grease the shock bolt threads.
- Clean any excess Loctite with a towel and isopropyl alcohol to prevent finish damage.
- Apply Motorex Copper Paste to inner diameter of headtube before installing headset cups.



	LOCTITE 243		
	LOCTITE 638		
	MOTOREX BIKE GREASE 2000		
	MOTOREX COPPER PASTE		

Do not apply Loctite to bolt threads.

	PART NUMBER	QTY
28mm 6902 Extended	FP-BRG-6902-LLUMAXECN-B0	6
28mm 6902 Standard	FP-BRG-6902-LLUMAX-B0	2
22mm 6900 Extended	FP-BRG-6900-LLUMAXE-B0	2